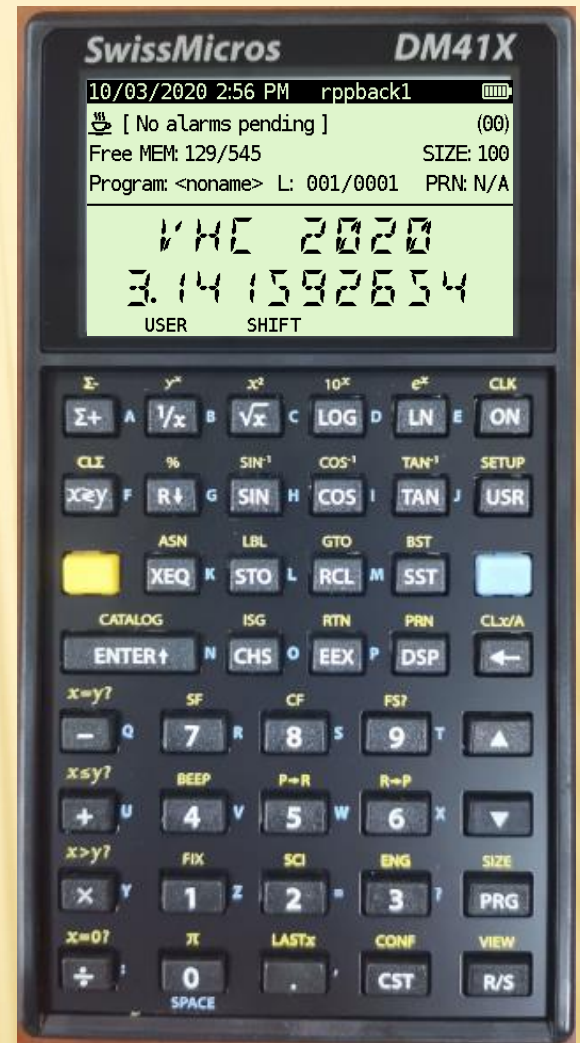


VHC 2020



A little late; a *lot* better

**SWISS MICROS DM41X**

Bob Prospero

# THE DM41X IS...

- ✘ An HP-41CX Clone with modern enhancements
- ✘ Built on same h/w & DMCP platform as the DM42
- ✘ Able to run virtually all 41 family software
  - ✘ FOCAL, Synthetics & MCODE
  - ✘ ROMs – HP & 3<sup>rd</sup> Party (any .mod file)
- ✘ Fast mode – runs ~50x normal CX (1x also available)
- ✘ Able to easily share files with your PC via USB
- ✘ Much better than when previewed @ HHC2019
  - ✘ <https://www.youtube.com/watch?v=0lahGco03xk>
- ✘ Available now! <https://www.swissmicros.com/>

# 41X DESIGN FOCUS / OBJECTIVES

- ✘ Pure 41CX – 100% OS compatibility
  - + Enormous base of Modules, programs, tools, books, etc.
- ✘ Leverage Large LCD to extend 41C UX
- ✘ Ease Installation and Mgmt. of ROM Modules
  - + No expertise needed to easily install and use ROMs
- ✘ Enhance usability of common / tedious features
- ✘ Simple/Reliable file exchange with PCs
- ✘ Simple backup/restore – safety and sharing



# DM41X COMPATIBILITY WITH 41 OS & S/W

- ✘ Runs original 41CX OS w/no changes\*
  - + \* Additional features added, none changed
- ✘ FOCAL, Synthetics and MCODE all supported
- ✘ Full 41 RAM (max. Normal & Ext Mem) available
- ✘ All pages (0-F) used in standard ways, no tricks
- ✘ Upper pages can be configured as qROM
  - + qROM (quasi-ROM) is RAM in ROM address space
    - ✘ Writing MCODE, modify existing modules, store programs, etc.
  - + Up to 8 pages (8-F) w/separate Load/Save RAM
  - + Supports MLDL, RAMBox, HEPAX applications, etc.

# DM41X COMPATIBILITY WITH 41 OS & S/W

- ✘ All Modules/ROMs/Pacs supported (h/w not incl.)
  - ✘ Wand, 82143 Ptr, Card Reader and HP-IL are *not* supported
- ✘ Comes pre-loaded w/20 HP Appl. Pac ROMs & PPC
- ✘ Additional .mod files easily added via USB FAT drive
  - ✘ 3 easy steps to copy, install and 'plug in' a module
- ✘ Store *many* ROMs and easily change configuration to use the ones you want as needed (512kB)
- ✘ .rom files easily converted to .mod w/MLDL2K, others
- ✘ Exotics fully supported
  - ✘ HEPAX, CCD, ZenROM, LIB4, All of Angel's Modules, etc.

# LEVERAGE LARGE LCD TO EXTEND 41 UI

## ✘ 3 Stack views – toggle any time

+ Full 4-level RPN Stack

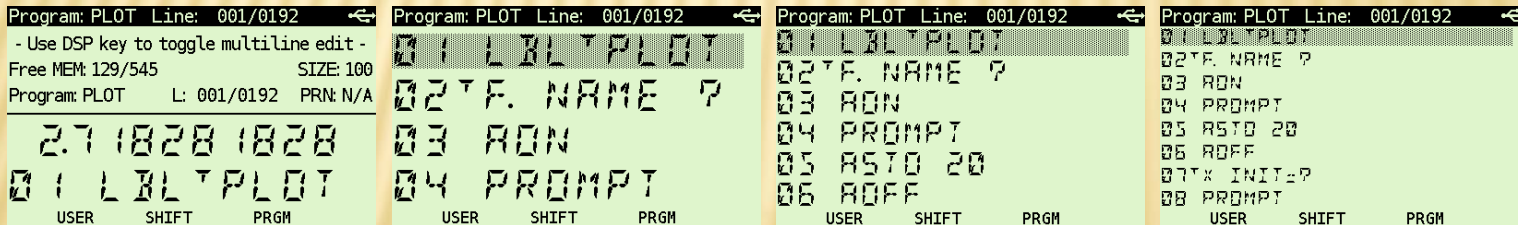
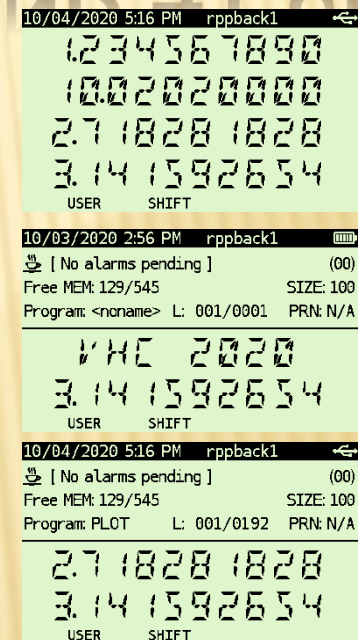
+ SysInfo\* + X & Alpha

+ SysInfo\* + X & Y

\* See 2019 video for details

## ✘ Multiline editor for PRGM mode

+ Enhanced to 1-, 4-, 6- and 8-line views !



HPCC 2020

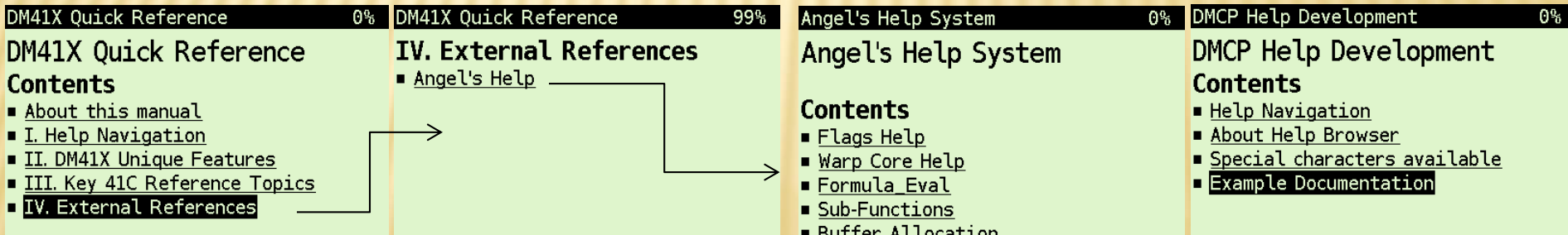


# LEVERAGE LARGE LCD TO EXTEND 41 UI

- ✘ High density data display
  - + e.g. Status of all 41 Flags
- ✘ Built-in Help

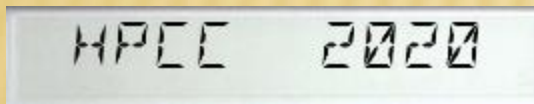
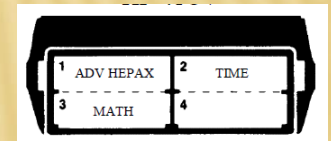
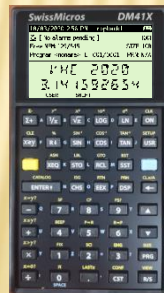
Flags										
	0	1	2	3	4	5	6	7	8	9
0x	0	0	0	0	0	0	0	0	0	0
1x	1	0	0	0	0	0	0	0	0	0
2x	0	0	1	1	0	0	1	1	1	1
3x	0	0	0	0	0	0	1	0	0	1
4x	1	0	0	0	0	0	0	0	0	0
5x	0	0	0	0	0	0				

- + Lightweight html browser, navigate w/links
- + Extensible via user created content
- + Detailed docs on how to author content included



# EASE INSTALL. & MGMT. OF ROM MODULES

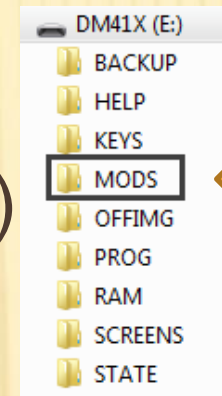
- ✘ Current device solns. require tech skills & patience
  - + 41CL, CLONIX / NoV, MLDL2K, RAMBox, etc.
  - + Simplicity of emulators is desired, but on a real device
- ✘ 41X uses easy 3-step process to load a module
  - + 1. Copy .mod file from PC to 41X FAT drive
  - + 2. Import file from FAT drive to Flash storage
  - + 3. Plug files into 41X Pages





# EASE INSTALL. & MGMT. OF ROM MODULES

- ✗ UI for installing a .mod file
  - + 41X FAT drive /MODS (6MB)
    - ✗ Drag-n-drop from PC
    - ✗ MMF [Impprt] opens file list
  - + Import from FAT to Flash (MMF)
    - ✗ Import and mgmt. tools for Flash area
    - ✗ Mods in Flash shown in alpha order
  - + Plug-in modules (AM)
    - ✗ Plug, Unplug, Re-arrange MODs
    - ✗ Page load sequence is from top-down



MOD Import to Flash		/MODS	
<Parent>	DIR	HEP-MEM.MOD	11K
41Z_BS_2X2...	21K	HEPAX_4H.MOD	31K
Advantage.mod	16K	Ladybug.mod	11K
boost.mod	11K	lb-test.mod	11K
EVAL_3K.MOD	5.8K	LIBRARY4.MOD	5.8K
FINANCE.MOD	5.8K	MACHINE.MOD	5.8K
GAMES.MOD	5.8K	MATH.MOD	5.8K
HEP-2MEM.MOD	21K	MATHSTAT.MOD	11K

Manage Modules in Flash		
AMC OS/X Module - 4P7 -BS4	MOD	4P
Library#4 Rev.R55	MOD	1P
Modified HEPAX_4H+ Module	MOD	6P
PPC ROM	MOD	2P
SM DM--41X	OS	6P
Thermal Printer	MOD	1P
Warp_Core BS++	MOD	3P
<b>Imprt</b>	<b>Mod</b>	<b>ROMs</b>
<b>Flash</b>	<b>Del</b>	<b>ClrFl</b>
Active Modules		
Library#4 Rev.R55	MOD	1P
AMC OS/X Module - 4P7 -BS4	MOD	4P
Modified HEPAX_4H+ Module	MOD	6P
Warp_Core BS++	MOD	3P
PPC ROM	MOD	2P
<b>Plug</b>	<b>Mod</b>	<b>Move↑</b>
<b>Move↓</b>	<b>Unplg</b>	<b>ClrAM</b>

# EASE INSTALL. & MGMT. OF ROM MODULES

## ✘ ROM-Map view of installed modules

- + 8 Pages x 4 banks per screen
- + Each cell is 1 x 4K ROM block
- + “Mx-y” ⇒ Module x, bank y as defined in the .mod file. R=RAM
- + Toggle Page / List views
- + 1-key access to AM view
  - ✘ Bounce btwn AM/ROM-Map views to adjust/confirm load sequence

Module ROM Map					
P	bank1	bank2	bank3	bank4	Modules by page:
0	M1-0	---	---	---	-> SM_NUT-CXX
1	M1-1	---	---	---	-> SM_NUT-CXX
2	M1-2	---	---	---	-> SM_NUT-CXX
3	M1-3	---	---	---	-> SM_NUT-CXX
4	M2-0	---	---	---	-> LIBRARY4
5	M1-4	M1-5	---	---	-> SM_NUT-CXX
6	M4-0	M4-1	M4-2	M4-3	-> HEPAX_4H
7	M3-0	M3-1	M3-2	M3-3	-> OSX_BS4X-P7
Pg 8-F	ROM-id	⇒AM			ModLst
Module ROM Map					
P	bank1	bank2	bank3	bank4	Modules by page:
8	M4-4R				-> HEPAX_4H
9	M4-5R				-> HEPAX_4H
A	M5-0	M5-1	M5-2	---	-> WARP_BS3
B	---	---	---	---	
C	M6-0	---	---	---	-> PPC
D	M6-1	---	---	---	-> PPC
E	---	---	---	---	
F	---	---	---	---	
Pg 0-7	ROM-id	⇒AM			ModLst
Module ROM Map					
P	bank1	bank2	bank3	bank4	Module list:
8	M4-4R				M1-SM_NUT-CXX
9	M4-5R				M2-LIBRARY4
A	M5-0	M5-1	M5-2	---	M3-OSX_BS4X-P7
B	---	---	---	---	M4-HEPAX_4H
C	M6-0	---	---	---	M5-WARP_BS3
D	M6-1	---	---	---	M6-PPC
E	---	---	---	---	
F	---	---	---	---	
Pg 0-7	ROM-id	⇒AM			ModPg

# ENHANCE USABILITY

- ✘ 19 Additional OS Functions (thanks Angel)
  - + System control, Alpha and Ext Mem functions
  - + ED\$ - ED enhanced with lower case & special chars
- ✘ Custom commands – like a 2<sup>nd</sup> shift
  - + [CST]-[key] invokes custom command
  - + e.g. [CST]-[A] performs XEQ “ALENG”
  - + Exec. in calc; inserted in PRGM modes
  - + 1-6 keys for freq. used system features
- ✘ Configure screen to tailor settings
  - + 19 keys including Alpha and cursors
  - + Load and Save available – share ‘em

DM41X Custom Menu

1.Help	A.ALENG	I.SIZE?
2.ROM Map	B.BFCAT	J.JUMP
3.Load RAW	C.PGCAT	K.
4.Save RAW	D.HEPDIR	L.CLA
5.USB Disk	E.ED\$	M.HEPROOM
6.Flags	F.FILL	N.TRNG
	G.RDN	O.ON
	H.HSAVEP	P.HPURFL

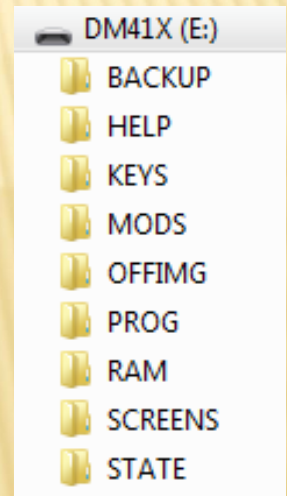
DM41X Custom Menu Edit

[Shift][alph]:	A.ALENG	I.SIZE?
PACK	B.BFCAT	J.JUMP
[Shift][▲]:	C.PGCAT	K.
FAST	D.HEPDIR	L.CLA
[Shift][▼]:	E.ED\$	M.HEPROOM
SLOW	F.FILL	N.TRNG
1.Load	G.RDN	O.ON
2.Save	H.HSAVEP	P.HPURFL



# SIMPLE/RELIABLE FILE EXCHANGE WITH PC/MAC/LINUX

- ✗ Easily connect & transfer files to/from PC
- ✗ 41X Appears as a new Drive on PC side
- ✗ No PC s/w needed, native OS supports
- ✗ Easily drag-n-drop files either way
- ✗ 41x ⇔ PC: SCREENS (e.g. a PowerPoint deck...)
- ✗ PC ⇔ 41X: HELP, OFFIMG
- ✗ PC ⇔ 41X: BACKUP, KEYS, MODS, PROG, RAM, STATE



# SIMPLE/RELIABLE FILE EXCHANGE WITH PC/MAC/LINUX

State: contains Program Mem, Ext Mem, Flags, Key Assignments & Registers

## ✘ Easy Backup / Restore

+ Protect and *share* your 41X contents

✘ Share your programs (or full state) on the Forum

+ Save / Load data components with named files

✘ CST Keys, RAM (Upper), **State**, Individual Progs (.raw)

✘ Module configuration\* (List of MODs & load sequence)

✘ \* .mod files must be imported into Flash prior to Load

+ Full Backup

✘ All of the above contents saved under a single name

✘ Maintain and swap among multiple 41X “personalities”

✘ Each personality has totally different modules, programs, data, etc.

✘ e. g. Writing MCODE, Refinance Estimates, EE Power Calcs.

# NO TIME TO DISCUSS (PLZ. CHECK-OUT)

- ✘ Printer Line Delay (same as IR “DELAY”)
  - + Throttle interline delay when printing via IR
  - + Easily “Print” to C. Giesselink’s virtual IR Printer  
<https://hp.giesselink.com/hp82240b.htm>
  - + See Meindert Kuipers’ article on building inexpensive IR receiver based on Martin Hepperle’s earlier work
    - ✘ <https://www.hpmuseum.org/forum/thread-14858-post-130564.html>
    - ✘ <https://www.mh-aerotools.de/hp/red-eye/index.htm>
- ✘ Export / Restore system settings
  - + Ptr line delay, display modes, mute, etc.





# THANKS TO:

---

- ✘ Michael & David – The reason these great machines exist
- ✘ Godwin and Angel – For lots of ideas, testing and mostly patience during some long design discussions
- ✘ All the 41X Beta customers that provided bug reports, feedback, motivation, and some good ideas
- ✘ The HHC, HPCC, Allschwil, MoHPC and SM Forum communities for fellowship, contributions by some really smart people and keeping this hobby fresh and interesting
- ✘ HPCC – For planning and hosting this VHC